



Customer: Goodekind
Address: 727 W. 7th St.
Los Angeles, CA 90017
Sample ID: SUNDAY BRUNCH D8
Matrix: Concentrates
Labnumber: 21C0008-01

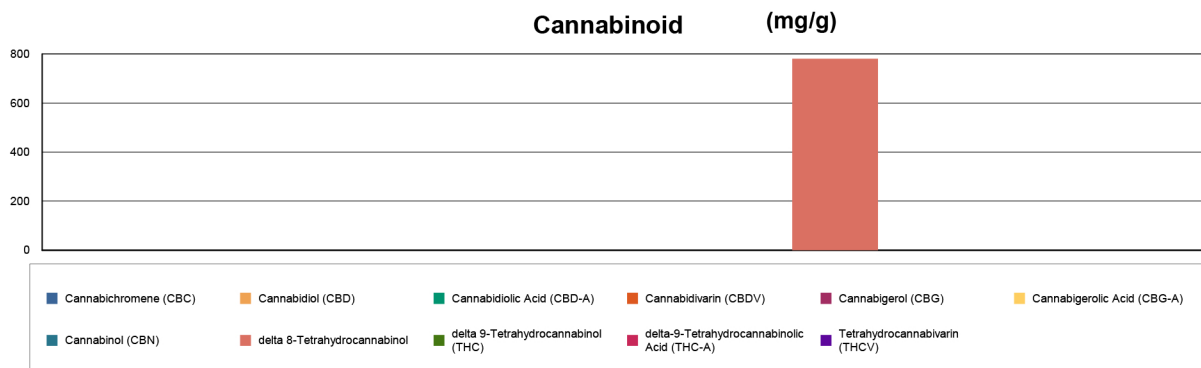
Cannabinoid Profile

Test Conditions: 19°C
Extraction Technician: SH
Analytical Chemist: CB

Extraction Date(s)	Analysis Date(s)
3/1/2021	3/1/2021

Cannabinoids (HPLC)		Results	
	LOD (mg/g)	%	mg/g
Cannabidivarin (CBDV)	<0.70		
Cannabidiolic Acid (CBD-A)	<0.70		
Cannabigerolic Acid (CBG-A)	<0.70		
Cannabigerol (CBG)	<0.70		
Cannabidiol (CBD)	<0.70		
Tetrahydrocannabivarin (THCV)	<0.70		
Cannabinol (CBN)	<0.70		
delta 9-Tetrahydrocannabinol (THC)	<0.70		
delta 8-Tetrahydrocannabinol		78.09	781
Cannabichromene (CBC)	<0.70		
delta-9-Tetrahydrocannabinolic Acid (THC-A)	<0.70		
Cannabinoids Total		%	mg/g
Max Active THC		0.00	0.00
Max Active CBD		0.00	0.00
T.Active Cannabinoids		0.00	0.00
Total Cannabinoids		78.10	781.00

Following USDA guidelines on uncertainty, Altitude Consulting's uncertainty is calculated to be +/- 2% for all cannabinoids using a coverage factor of 2 (95% confidence interval). Measurement uncertainty has not been factored into reported values.
Blank results indicate the compound was below the limit of detection.



[Signature]

Gary Brook - Laboratory Director - 3/2/2021

Reporting Limits will vary based on sample extraction weight used for the analysis.

Altitude Consulting, LLC utilizes NIST traceable Reference Standards and Certified Reference Material to calibrate analytical instruments along with proven analytical methods. The methods are applied in the most ethical manner following good laboratory practice guidelines. The results of this report are based solely on the sample submitted and cannot be reproduced. Decision Rule: Measurement uncertainty is not accounted for in the reported values. Results are based solely on calculated numbers. Altitude Consulting makes no Statements of conformity. **Pesticide, metal, and microbial analyses are subcontracted to ISO 17025 laboratories.**

Customer: Goodekind
Address: 727 W. 7th St.
Los Angeles, CA 90017
Sample ID: Sunday Brunch D8
Matrix: Concentrates
Labnumber: 21C0115-01



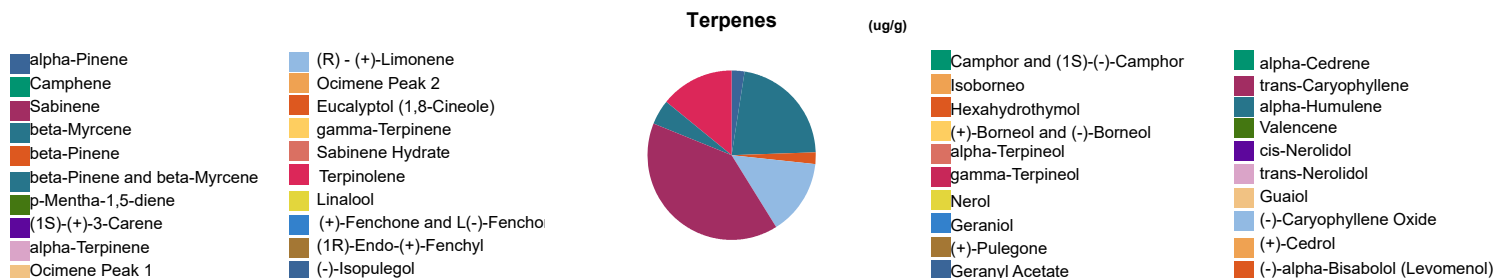
Terpene Profile

Test Conditions: 19°C
Extraction Technician: SH
Analytical Chemist: CB

Extraction Date(s)	Analysis Date(s)
3/5/2021	3/5/2021

Terpene (GC/MS)	Results	Terpene (GC/MS)	Results
	ug/g		ug/g
alpha-Pinene	761	Isoborneol	
Camphene		Hexahydrothymol	
Sabinene		(+)-Borneol and (-)-Borneol	
beta-Myrcene	6860	alpha-Terpineol	
beta-Pinene	761	gamma-Terpineol	
p-Mentha-1,5-diene		Nerol	
(1S)-(+)-3-Carene		Geraniol	
alpha-Terpinene		(+)-Pulegone	
Ocimene Peak 1		Geranyl Acetate	
(R) - (+)-Limonene	4490	alpha-Cedrene	
Ocimene Peak 2		trans-Caryophyllene	>12000
Eucalyptol (1,8-Cineole)		alpha-Humulene	1520
gamma-Terpinene		Valencene	
Sabinene Hydrate		cis-Nerolidol	
Terpinolene	4430	trans-Nerolidol	
Linalool		Guaiol	
(+)-Fenchone and L(-)-Fenchone		(-)-Caryophyllene Oxide	
(1R)-Endo-(+)-Fenchyl		(+)-Cedrol	
(-)-Isopulegol		(-)-alpha-Bisabolol (Levomenol)	
Camphor and (1S)-(-)-Camphor			

Blank results indicate the compound was below the limit of detection.



Reporting limit is roughly 40 ug/g depending on amount extracted.

Gary Brook - Laboratory Director - 3/8/2021

Reporting Limits will vary based on sample extraction weight used for the analysis.

Altitude Consulting, LLC utilizes NIST traceable Reference Standards and Certified Reference Material to calibrate analytical instruments along with proven analytical methods. The methods are applied in the most ethical manner following good laboratory practice guidelines. The results of this report are based solely on the sample submitted and cannot be reproduced. Decision Rule: Measurement uncertainty is not accounted for in the reported values. Results are based solely on calculated numbers. Altitude Consulting makes no Statements of conformity. **Pesticide, metal, and microbial analyses are subcontracted to ISO 17025 laboratories.**

Customer: Goodekind
Address: 727 W. 7th St.
Los Angeles, CA 90017
Sample ID: Sunday Brunch D8
Matrix: Concentrates
Labnumber: 21C0115-01



Pesticide Profile

Test Conditions: °C
Extraction Technician: DLF
Analytical Chemist: EGP

Extraction Date(s)	Analysis Date(s)
3/11/2021	3/24/2021

Pesticides (LC/MS/MS)	Results	LOD	Pesticides (LC/MS/MS)	Results	LOD
	ppm	ppm		ppm	ppm
Acephate		0.966	Acequinocyl		4.83
Acetamiprid		0.483	Aldicarb		0.966
Azoxystrobin		0.483	Bifenthrin		0.483
Boscalid		0.966	Carbaryl		0.483
Carbofuran		0.483	Chlorpyrifos		0.483
Diazinon		0.483	Dimethoate		0.483
Ethoprophos		0.483	Etofenprox		0.966
Etoxazole		0.483	Fenoxycarb		0.483
Fenpyroximate E		0.966	Flonicamid		2.42
Fludioxonil		0.966	Hexythiazox		2.42
Imazalil		0.483	Imidacloprid		0.966
Kresoxim-methyl		0.966	Malathion		0.483
Metalaxyl		0.483	Methiocarb		0.483
Methomyl		0.966	Myclobutanil		0.483
Naled		1.21	Oxamyl		2.42
Piperonyl butoxide		4.83	Propiconazole		0.966
Propoxure		0.483	Spiromesifen		0.483
Spirotetramat		0.483	Spiroxamine		0.966
Tebuconazole		0.966	Thiacloprid		0.483
Thiamethoxam		0.483	Trifloxystrobin		0.483
Abamectin		1.21	Bifenazate		0.483
Chlorantraniliprole		0.483	Clofentezine		0.483
Cyfluthrin		2.42	Cypermethrin		2.42
Daminozide		2.42	DDVP (Dichlorvos)		0.242
Fipronil		0.966	Paclobutrazol		0.966
Permethrins		0.483	Phosmet		0.483
Prallethrin		0.483	Pyrethrins		2.42
Pyridaben		0.483	Spinosad		0.483

Blank results indicate the compound was below the limit of detection.

Gary Brook - Laboratory Director - 4/1/2021

Reporting Limits will vary based on sample extraction weight used for the analysis.

The results of this report are based solely on the sample submitted and cannot be reproduced. Decision Rule: Measurement uncertainty is not accounted for in the reported values.

Results are based solely on calculated numbers. Altitude Consulting makes no Statements of conformity. **Pesticide, metal, and microbial analyses are subcontracted to ISO 17025 laboratories.**