

Customer: Goodekind
Address: 727 W. 7th St.
Los Angeles, CA 90017
Sample ID: Purple Rain D8
Matrix: Concentrates
Labnumber: 21C0115-03



Pesticide Profile

Test Conditions: °C
Extraction Technician: LSH
Analytical Chemist: EGP

Extraction Date(s)	Analysis Date(s)
3/15/2021	3/22/2021

Pesticides (LC/MS/MS)	Results	LOD	Pesticides (LC/MS/MS)	Results	LOD
	ppm	ppm		ppm	ppm
Acephate		0.859	Acequinocyl		4.30
Acetamiprid		0.430	Aldicarb		0.859
Azoxystrobin		0.430	Bifenthrin		0.430
Boscalid		0.859	Carbaryl		0.430
Carbofuran		0.430	Chlorpyrifos		0.430
Diazinon		0.430	Dimethoate		0.430
Ethoprophos		0.430	Etofenprox		0.859
Etoxazole		0.430	Fenoxycarb		0.430
Fenpyroximate E		0.859	Flonicamid		2.15
Fludioxonil		0.859	Hexythiazox		2.15
Imazalil		0.430	Imidacloprid		0.859
Kresoxim-methyl		0.859	Malathion		0.430
Metalaxyl		0.430	Methiocarb		0.430
Methomyl		0.859	Myclobutanil		0.430
Naled		1.07	Oxamyl		2.15
Piperonyl butoxide		4.30	Propiconazole		0.859
Propoxure		0.430	Spiromesifen		0.430
Spirotetramat		0.430	Spiroxamine		0.859
Tebuconazole		0.859	Thiacloprid		0.430
Thiamethoxam		0.430	Trifloxystrobin		0.430
Abamectin		1.07	Bifenazate		0.430
Chlorantraniliprole		0.430	Clofentezine		0.430
Cyfluthrin		2.15	Cypermethrin		2.15
Daminozide		2.15	DDVP (Dichlorvos)		0.215
Fipronil		0.859	Paclobutrazol		0.859
Permethrins		0.430	Phosmet		0.430
Prallethrin		0.430	Pyrethrins		2.15
Pyridaben		0.430	Spinosad		0.430

Blank results indicate the compound was below the limit of detection.

Gary Brook - Laboratory Director - 4/1/2021

Reporting Limits will vary based on sample extraction weight used for the analysis.

The results of this report are based solely on the sample submitted and cannot be reproduced. Decision Rule: Measurement uncertainty is not accounted for in the reported values.

Results are based solely on calculated numbers. Altitude Consulting makes no Statements of conformity. **Pesticide, metal, and microbial analyses are subcontracted to ISO 17025 laboratories.**



Customer: Goodekind
Address: 727 W. 7th St.
Los Angeles, CA 90017
Sample ID: PURPLE RAIN D8
Matrix: Concentrates
Labnumber: 21C0008-03

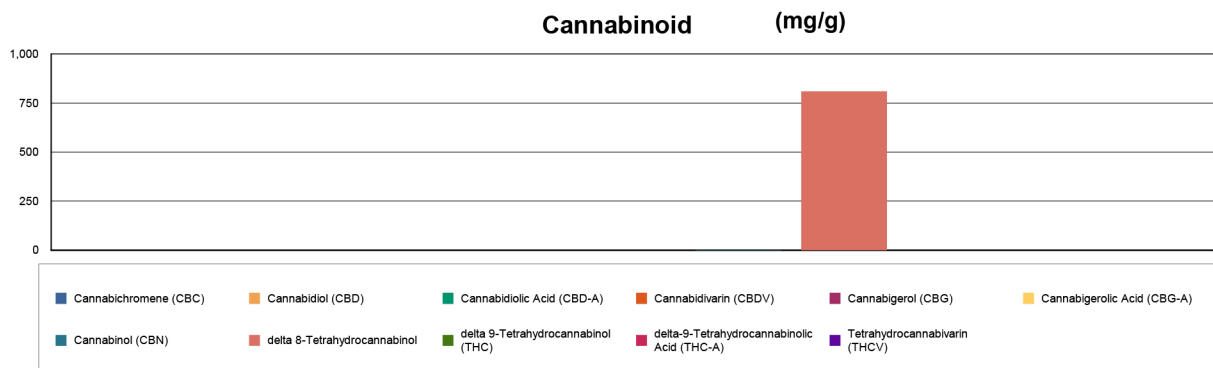
Cannabinoid Profile

Test Conditions: 19°C
Extraction Technician: SH
Analytical Chemist: CB

Extraction Date(s)	Analysis Date(s)
3/1/2021	3/1/2021

Cannabinoids (HPLC)		Results	
	LOD (mg/g)	%	mg/g
Cannabidivarin (CBDV)	<0.70		
Cannabidiolic Acid (CBD-A)	<0.70		
Cannabigerolic Acid (CBG-A)	<0.70		
Cannabigerol (CBG)	<0.70		
Cannabidiol (CBD)	<0.70		
Tetrahydrocannabivarin (THCV)	<0.70		
Cannabinol (CBN)		0.17	1.69
delta 9-Tetrahydrocannabinol (THC)	<0.70		
delta 8-Tetrahydrocannabinol		80.99	810
Cannabichromene (CBC)	<0.70		
delta-9-Tetrahydrocannabinolic Acid (THC-A)	<0.70		
Cannabinoids Total		%	mg/g
Max Active THC		0.00	0.00
Max Active CBD		0.00	0.00
T.Active Cannabinoids		0.17	1.69
Total Cannabinoids		81.20	812.00

Following USDA guidelines on uncertainty, Altitude Consulting's uncertainty is calculated to be +/- 2% for all cannabinoids using a coverage factor of 2 (95% confidence interval). Measurement uncertainty has not been factored into reported values.
Blank results indicate the compound was below the limit of detection.



[Signature]

Gary Brook - Laboratory Director - 3/2/2021

Reporting Limits will vary based on sample extraction weight used for the analysis.

Altitude Consulting, LLC utilizes NIST traceable Reference Standards and Certified Reference Material to calibrate analytical instruments along with proven analytical methods. The methods are applied in the most ethical manner following good laboratory practice guidelines. The results of this report are based solely on the sample submitted and cannot be reproduced. Decision Rule: Measurement uncertainty is not accounted for in the reported values. Results are based solely on calculated numbers. Altitude Consulting makes no Statements of conformity. Pesticide, metal, and microbial analyses are subcontracted to ISO 17025 laboratories.

Customer: Goodekind
Address: 727 W. 7th St.
Los Angeles, CA 90017
Sample ID: Purple Rain D8
Matrix: Concentrates
Labnumber: 21C0115-03



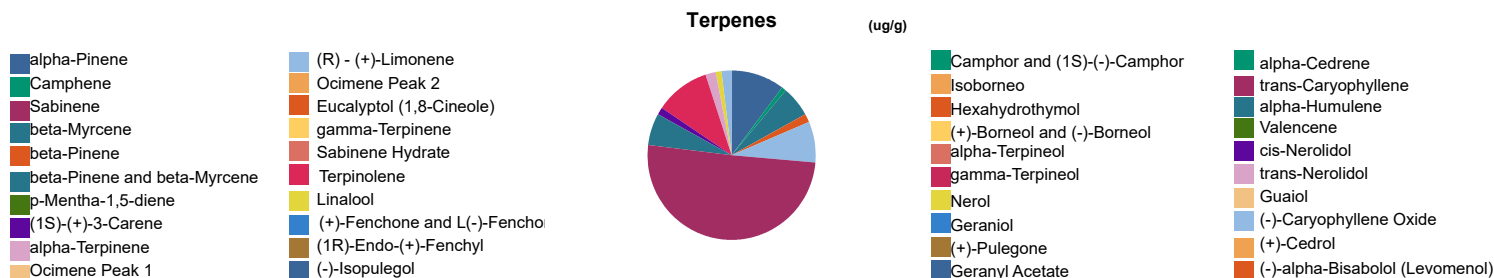
Terpene Profile

Test Conditions: 20°C
Extraction Technician: SH
Analytical Chemist: CB

Extraction Date(s)	Analysis Date(s)
3/8/2021	3/8/2021

Terpene (GC/MS)	Results	Terpene (GC/MS)	Results
	ug/g		ug/g
alpha-Pinene	5410	Isoborneol	
Camphene	364	Hexahydrothymol	
Sabinene		(+)-Borneol and (-)-Borneol	
beta-Myrcene	3060	alpha-Terpineol	
beta-Pinene	870	gamma-Terpineol	
p-Mentha-1,5-diene		Nerol	
(1S)-(+)-3-Carene		Geraniol	
alpha-Terpinene		(+)-Pulegone	
Ocimene Peak 1		Geranyl Acetate	
(R) - (+)-Limonene	4070	alpha-Cedrene	
Ocimene Peak 2		trans-Caryophyllene	>12000
Eucalyptol (1,8-Cineole)		alpha-Humulene	3110
gamma-Terpinene		Valencene	
Sabinene Hydrate		cis-Nerolidol	736
Terpinolene	5570	trans-Nerolidol	919
Linalool	683	Guaiol	
(+)-Fenchone and L(-)-Fenchone		(-)-Caryophyllene Oxide	985
(1R)-Endo-(+)-Fenchyl		(+)-Cedrol	
(-)-Isopulegol		(-)-alpha-Bisabolol (Levomenol)	
Camphor and (1S)-(-)-Camphor			

Blank results indicate the compound was below the limit of detection.



Reporting limit is roughly 40 ug/g depending on amount extracted.

[Signature]

Gary Brook - Laboratory Director - 3/9/2021

Reporting Limits will vary based on sample extraction weight used for the analysis.

The results of this report are based solely on the sample submitted and cannot be reproduced. Decision Rule: Measurement uncertainty is not accounted for in the reported values.

Results are based solely on calculated numbers. Altitude Consulting makes no Statements of conformity. **Pesticide, metal, and microbial analyses are subcontracted to ISO**

17025 laboratories.