



Customer: Goodekind
Address: 727 W. 7th St.
Los Angeles, CA 90017
Sample ID: BLIND LEMON D8
Matrix: Concentrates
Labnumber: 21C0008-02

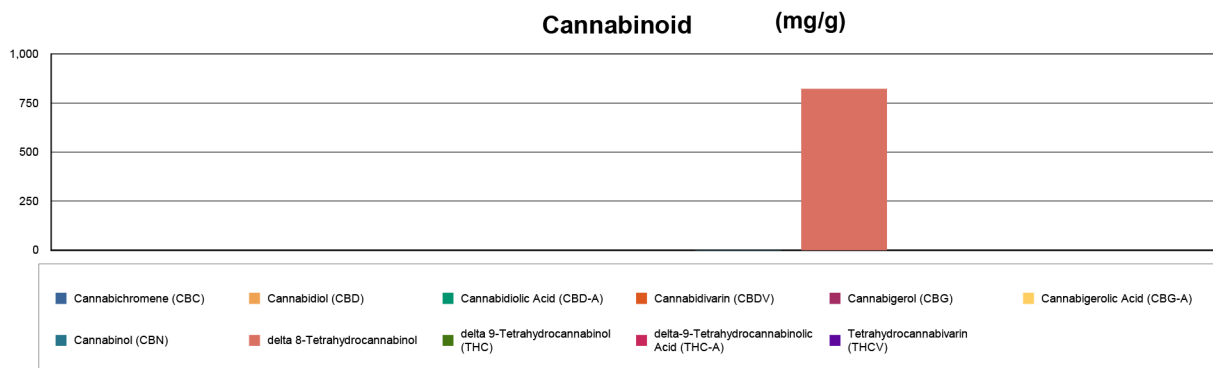
Cannabinoid Profile

Test Conditions: 19°C
Extraction Technician: SH
Analytical Chemist: CB

Extraction Date(s)	Analysis Date(s)
3/1/2021	3/1/2021

Cannabinoids (HPLC)		Results	
	LOD (mg/g)	%	mg/g
Cannabidivarin (CBDV)	<0.60		
Cannabidiolic Acid (CBD-A)	<0.60		
Cannabigerolic Acid (CBG-A)	<0.60		
Cannabigerol (CBG)	<0.60		
Cannabidiol (CBD)	<0.60		
Tetrahydrocannabivarin (THCV)	<0.60		
Cannabinol (CBN)		0.16	1.58
delta 9-Tetrahydrocannabinol (THC)	<0.60		
delta 8-Tetrahydrocannabinol		82.24	822
Cannabichromene (CBC)	<0.60		
delta-9-Tetrahydrocannabinolic Acid (THC-A)	<0.60		
Cannabinoids Total		%	mg/g
Max Active THC		0.00	0.00
Max Active CBD		0.00	0.00
T.Active Cannabinoids		0.16	1.58
Total Cannabinoids		82.40	824.00

Following USDA guidelines on uncertainty, Altitude Consulting's uncertainty is calculated to be +/- 2% for all cannabinoids using a coverage factor of 2 (95% confidence interval). Measurement uncertainty has not been factored into reported values.
Blank results indicate the compound was below the limit of detection.



[Signature]

Gary Brook - Laboratory Director - 3/2/2021

Reporting Limits will vary based on sample extraction weight used for the analysis.

Altitude Consulting, LLC utilizes NIST traceable Reference Standards and Certified Reference Material to calibrate analytical instruments along with proven analytical methods. The methods are applied in the most ethical manner following good laboratory practice guidelines. The results of this report are based solely on the sample submitted and cannot be reproduced. Decision Rule: Measurement uncertainty is not accounted for in the reported values. Results are based solely on calculated numbers. Altitude Consulting makes no Statements of conformity. **Pesticide, metal, and microbial analyses are subcontracted to ISO 17025 laboratories.**

Customer: Goodekind
Address: 727 W. 7th St.
Los Angeles, CA 90017
Sample ID: Blind Lemon D8
Matrix: Concentrates
Labnumber: 21C0115-02



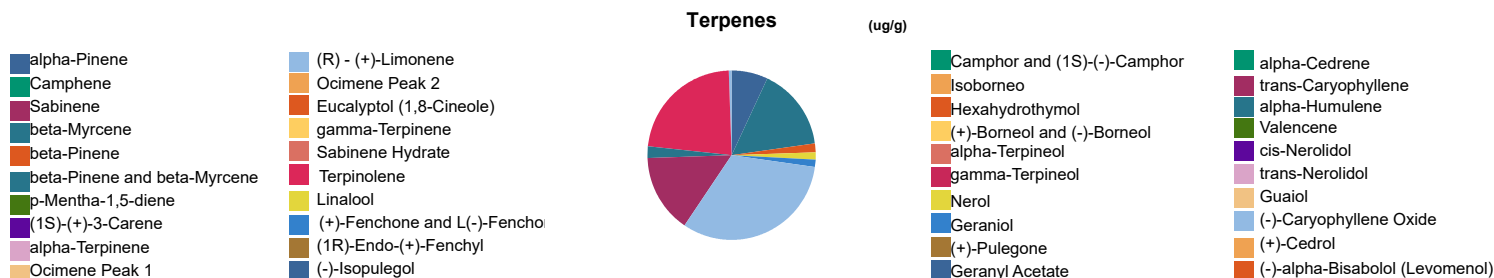
Terpene Profile

Test Conditions: 19°C
Extraction Technician: SH
Analytical Chemist: CB

Extraction Date(s)	Analysis Date(s)
3/5/2021	3/5/2021

Terpene (GC/MS)	Results	Terpene (GC/MS)	Results
	ug/g		ug/g
alpha-Pinene	3440	Isoborneol	
Camphene		Hexahydrothymol	
Sabinene		(+)-Borneol and (-)-Borneol	
beta-Myrcene	7800	alpha-Terpineol	
beta-Pinene	856	gamma-Terpineol	
p-Mentha-1,5-diene		Nerol	613
(1S)-(+)-3-Carene		Geraniol	757
alpha-Terpinene		(+)-Pulegone	
Ocimene Peak 1		Geranyl Acetate	
(R) - (+)-Limonene	>12000	alpha-Cedrene	
Ocimene Peak 2		trans-Caryophyllene	7390
Eucalyptol (1,8-Cineole)		alpha-Humulene	1070
gamma-Terpinene		Valencene	
Sabinene Hydrate		cis-Nerolidol	
Terpinolene	11200	trans-Nerolidol	
Linalool		Guaiol	
(+)-Fenchone and L(-)-Fenchone		(-)-Caryophyllene Oxide	342
(1R)-Endo-(+)-Fenchyl		(+)-Cedrol	
(-)-Isopulegol		(-)-alpha-Bisabolol (Levomenol)	
Camphor and (1S)-(-)-Camphor			

Blank results indicate the compound was below the limit of detection.



Reporting limit is roughly 40 ug/g depending on amount extracted.

[Signature]

Gary Brook - Laboratory Director - 3/8/2021

Reporting Limits will vary based on sample extraction weight used for the analysis.

Altitude Consulting, LLC utilizes NIST traceable Reference Standards and Certified Reference Material to calibrate analytical instruments along with proven analytical methods. The methods are applied in the most ethical manner following good laboratory practice guidelines. The results of this report are based solely on the sample submitted and cannot be reproduced. Decision Rule: Measurement uncertainty is not accounted for in the reported values. Results are based solely on calculated numbers. Altitude Consulting makes no Statements of conformity. **Pesticide, metal, and microbial analyses are subcontracted to ISO 17025 laboratories.**

Customer: Goodekind
Address: 727 W. 7th St.
Los Angeles, CA 90017
Sample ID: Blind Lemon D8
Matrix: Concentrates
Labnumber: 21C0115-02



Pesticide Profile

Test Conditions: °C
Extraction Technician: DLF
Analytical Chemist: EGP

Extraction Date(s)	Analysis Date(s)
3/11/2021	3/24/2021

Pesticides (LC/MS/MS)	Results	LOD	Pesticides (LC/MS/MS)	Results	LOD
	ppm	ppm		ppm	ppm
Acephate		1.25	Acequinocyl		6.26
Acetamiprid		0.626	Aldicarb		1.25
Azoxystrobin		0.626	Bifenthrin		0.626
Boscalid		1.25	Carbaryl		0.626
Carbofuran		0.626	Chlorpyrifos		0.626
Diazinon		0.626	Dimethoate		0.626
Ethoprophos		0.626	Etofenprox		1.25
Etoxazole		0.626	Fenoxycarb		0.626
Fenpyroximate E		1.25	Flonicamid		3.13
Fludioxonil		1.25	Hexythiazox		3.13
Imazalil		0.626	Imidacloprid		1.25
Kresoxim-methyl		1.25	Malathion		0.626
Metalaxyl		0.626	Methiocarb		0.626
Methomyl		1.25	Myclobutanil		0.626
Naled		1.56	Oxamyl		3.13
Piperonyl butoxide		6.26	Propiconazole		1.25
Propoxure		0.626	Spiromesifen		0.626
Spirotetramat		0.626	Spiroxamine		1.25
Tebuconazole		1.25	Thiacloprid		0.626
Thiamethoxam		0.626	Trifloxystrobin		0.626
Abamectin		1.56	Bifenazate		0.626
Chlorantraniliprole		0.626	Clofentezine		0.626
Cyfluthrin		3.13	Cypermethrin		3.13
Daminozide		3.13	DDVP (Dichlorvos)		0.313
Fipronil		1.25	Paclobutrazol		1.25
Permethrins		0.626	Phosmet		0.626
Prallethrin		0.626	Pyrethrins		3.13
Pyridaben		0.626	Spinosad		0.626

Blank results indicate the compound was below the limit of detection.

Gary Brook - Laboratory Director - 4/1/2021

Reporting Limits will vary based on sample extraction weight used for the analysis.

The results of this report are based solely on the sample submitted and cannot be reproduced. Decision Rule: Measurement uncertainty is not accounted for in the reported values.

Results are based solely on calculated numbers. Altitude Consulting makes no Statements of conformity. **Pesticide, metal, and microbial analyses are subcontracted to ISO 17025 laboratories.**